
BLAINE

TECH SERVICES

Environmental Sampling
Field Support Services





Services

Groundwater Monitoring & Sampling

Soil Gas / Soil Vapor Sampling

Soil Sampling

System O & M

Remediation Support

Pump & Aquifer Tests

Well Development

Wellhead Maintenance

Related Sampling Services



Groundwater Monitoring & Sampling

Low Stress / Low Flow Sampling

Traditional Volume Purging and Sampling

PFAS Sampling

Deep Well Sampling (>1,000 bgs)

Multilevel Systems (Westbay, CMT, Barcad)

Passive Diffusion Bags (PDB)

HydraSleeves

Discrete Depth Sampling

Domestic / Production Well Sampling

LNAPL & DNAPL Sampling

Groundwater Monitoring & Sampling

Basewide Monitoring Program

Space Launch & Missile Testing Base



More than 400 samples are collected in support of the Basewide Groundwater Monitoring Program at this active DOD site.

Field activities include PFAS sampling, Low Flow sampling at 500' bgs, and surface water and cliffside ocean seeps sampling.

Many sampling locations at this remote, mountainous, 22-square-mile site are accessible only by foot, 4WD vehicle or UTV.

Compliance with endangered species driven work restrictions is required across the site. Field activities in several areas must be completed within narrow tidal windows.

Multi-State Petroleum UST Program

Major Oil Company



Technicians, vehicles and equipment provided to safely monitor up to 800 retail UST sites and bulk fuel terminals quarterly throughout four contiguous states.

Field services include:

- Monitoring, Sampling & SPH Recovery
- PFAS Sampling
- IDW Collection, Transport & Disposal
- Traffic Control Execution
- Well Development
- Wellhead Repair & Maintenance

Project management services include:

- Scheduling & Notifications
- Notifications to Agencies, Operators & Property Owners
- Coordination with Laboratories and Other Subs
- Traffic Control Permitting
- IDW Management

Groundwater Monitoring & Sampling

Groundwater Sampling & Remediation System O&M

Permian Basin Oilfield



Quarterly groundwater sampling and remediation system O&M performed at 20 oilfield operations sites.

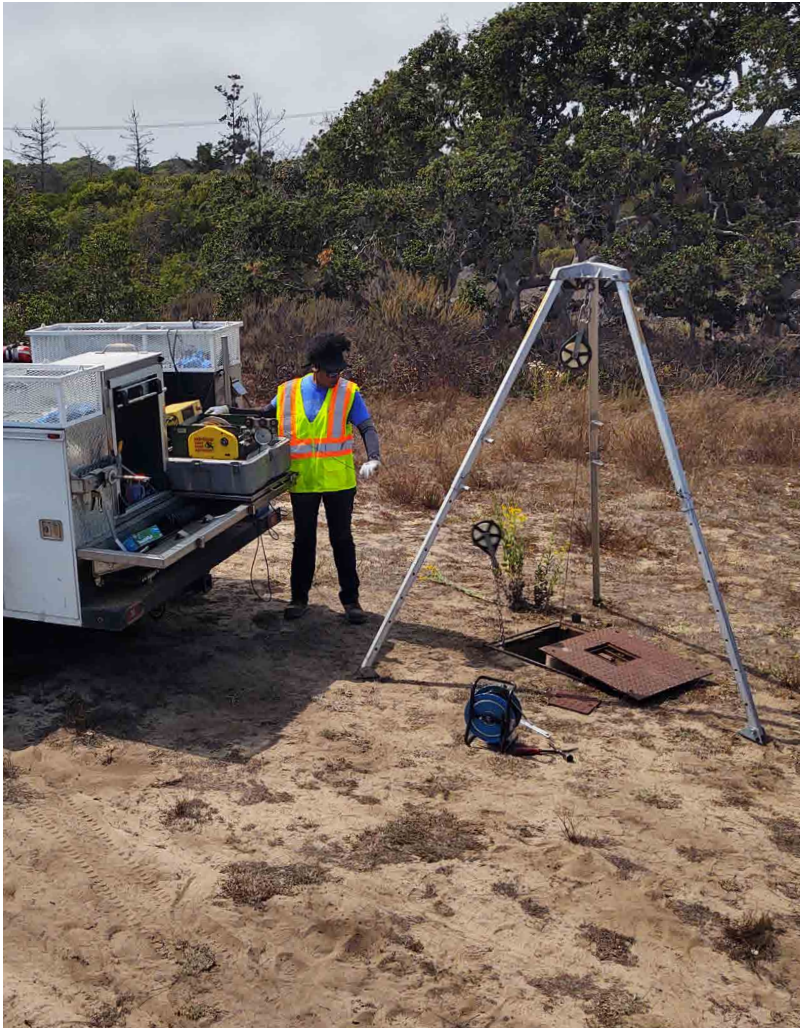
The remote sites span an area of 2,000 square miles and are accessed via unimproved dirt roads subject to flooding.

Low Flow and conventional groundwater sampling is performed using dedicated and portable ProActive Sample Champ and QED Sample Pro Bladder pumps.

Work requires extensive coordination with landowners and oilfield operators.

Westbay System Sampling

Former Military Reservation



MOSDAX Sampler Probe, 500m Cable & Motorized Winch

Groundwater Monitoring & Sampling

Low Flow Sampling at 1,200' bgs

Former Fuel & Chemical Distribution Facility



Up to 700 wells are monitored and over 400 samples collected from wells spanning 8 aquifers (up to 1,200' bgs).

Equipment provided includes:

- QED ST1102M HP Bladder Pumps
- Grundfos RF2 / SQE 3" Electric - Submersible Pumps
- Waterra Pumps
- Peristaltic Pumps
- Hydra-Sleeve Depth Discrete Samplers
- Pressure Transducers

Services include:

- PFAS Sampling
- Depth Discrete Sampling
- Low Stress / Low Flow Sampling
- Sampling Beneath LNAPL
- HVAC and Oxygen/Ozone Injection
- Pilot Test Support
- Well Development (2,500 gal per well)

Bi-monthly Gauging & Groundwater Sampling

Former Aerospace Research, Development & Manufacturing Plant



Bi-monthly gauging and groundwater sampling of up to 140 wells is performed at this expansive site.

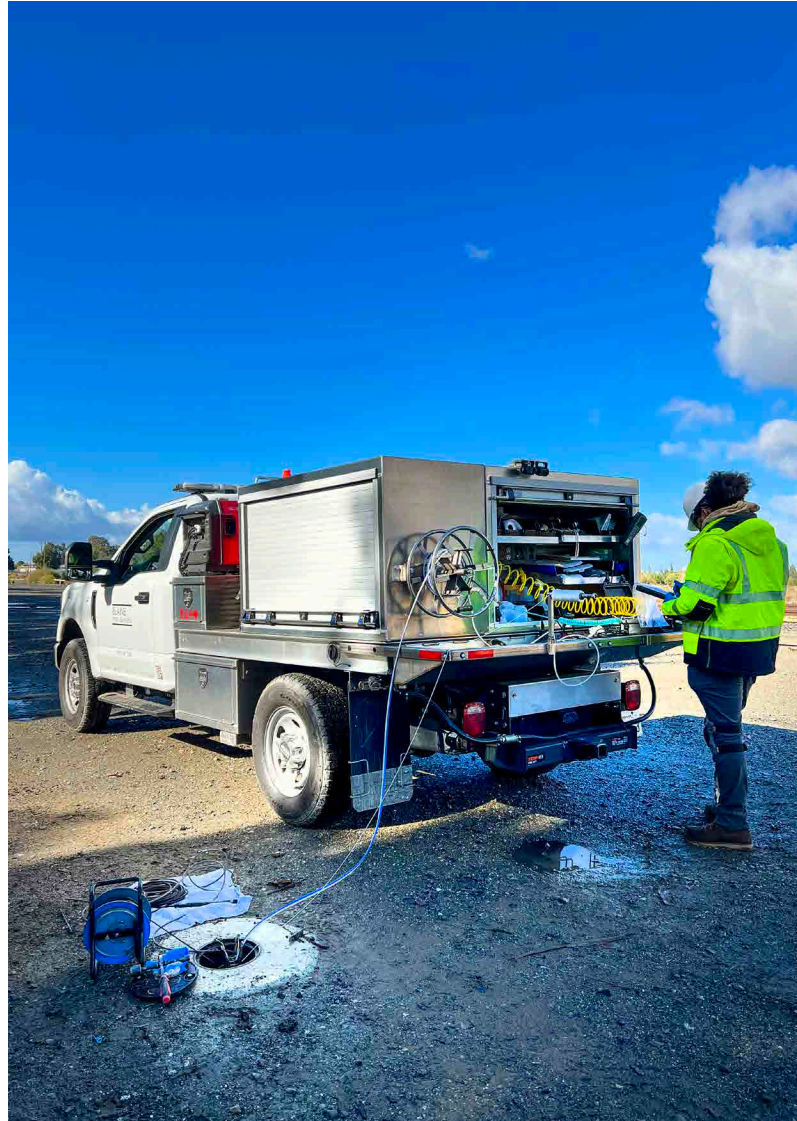
Groundwater is sampled using Low Flow methodology and YSI Multi-Parameter Meters and Flow Cells in strict accordance with the project-specific QAPP.

Data collection is performed using FULCRUM software and mobile devices.

Groundwater Monitoring & Sampling

Low Flow Sampling

Railway Release Site



Sampling is performed for multiple client consultants at dozens of national freight-hauling railroad sites.

Sites include active and inactive railyards, maintenance facilities and release sites.

Contaminants of concern are wide ranging and include diesel fuel, TCE, PCE, Vinyl Chloride and 1,2 DCA.

Special railway safety training and badging is required as is coordinating with Flagmen and designated site safety personnel.

Site-wide Groundwater & Ambient Air Monitoring Program

Former Rocket Engine Test & Nuclear Research Facility



Sampling services, including PFAS sampling, performed at this mountainous, 2,849-acre site in support of a comprehensive environmental investigation and cleanup program being conducted by multiple parties including DOE, NASA, Boeing and DTSC.

300+ wells are gauged and sampled each event. Sampling of Westbay, FLUTE and CMT well systems is performed as well as Low Flow sampling at depths of 1,000' bgs.

Ambient air monitoring stations are sampled for particulate matter and radiological contaminants.



Soil Gas / Soil Vapor Sampling

Landfill Gas Monitoring & Sampling

Indoor Air Monitoring

Shallow & Subslab Probe Install

Vapor Pin® Install & Extraction

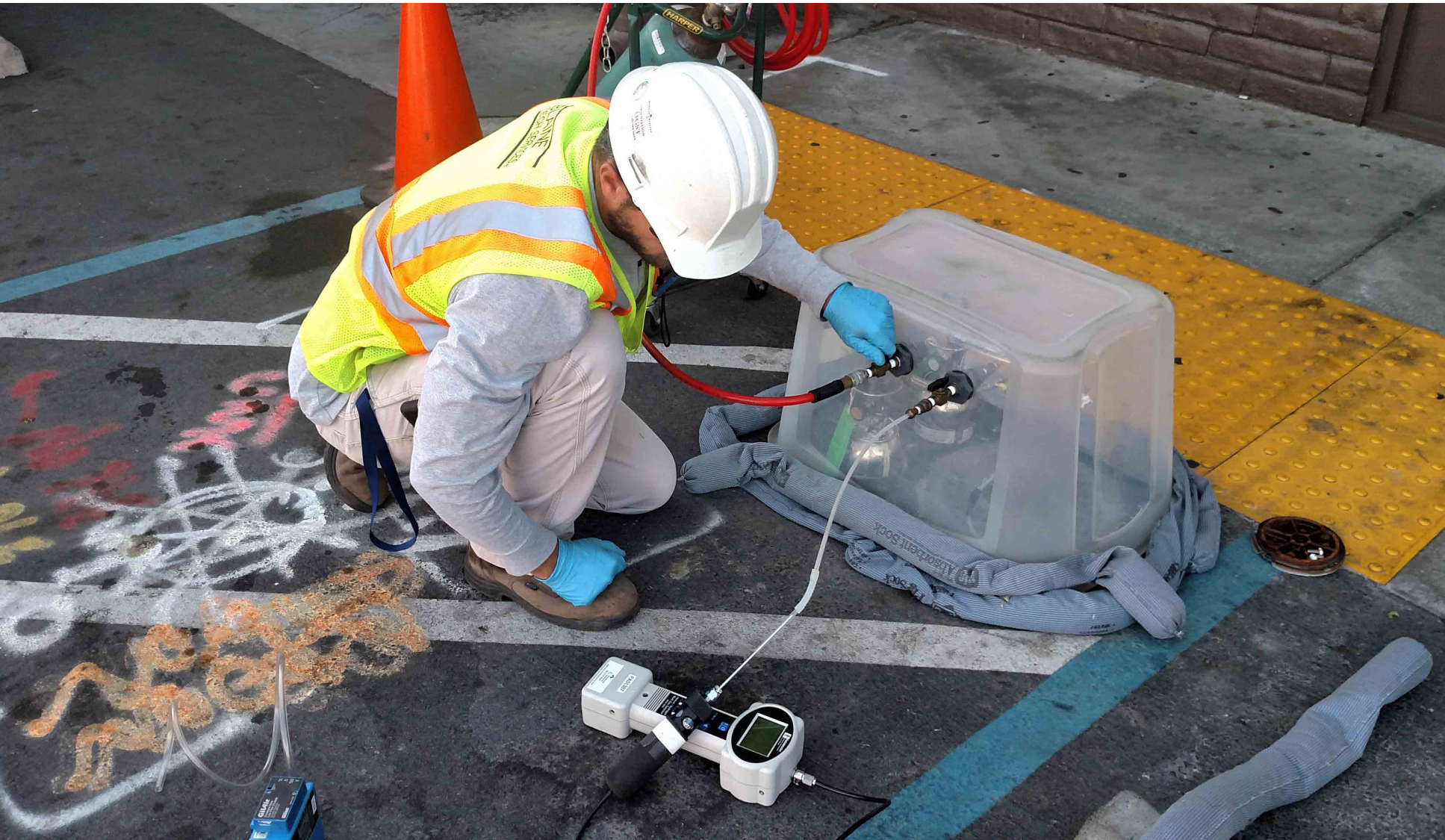
Passive Soil Sampler Install and Retrieval

(GORE-SORBER®, Beacon BESURE™)

Soil Gas / Soil Vapor Sampling

Leak Detection Shroud Sampling

Former Dry Cleaners



Blaine Tech performs soil vapor sampling in compliance with current standards and protocols using tracer gas, shrouds, lung boxes, and vacuum leak tests.

“It is always a pleasure to work with people who are professional at what they do.

I enjoyed working with [the Blaine Technician]. He communicated well and answered my questions in a thoughtful, pleasant manner.

It was a job well done on a busy, small site.”

Dielectric MGD 2002 Helium Detector,
Leak Detection Shroud

Soil Gas / Soil Vapor Sampling

GORE-SORBER® Install
Former Dry Cleaners



DeWalt Electric Roto-Hammer
AMS Stainless Steel Auger

Concrete Coring Prior to Probe Install
Metals Recycling Facility



Electric Coring Drill

Landfill Gas Sampling
Former Naval Air Station



Summa Canisters, GEM 2000 Landfill Gas Analyzer

“Again, I really appreciate you guys working with us and our insane schedule.

All of the techs have done a really, really great job so we really appreciate all of the work you’re doing for us.”



Soil Sampling

Hand Augering

Shallow Soil Borings

Stockpile Sampling

Soil Sampling

Site-wide Soil Investigation

Former Industrial Site



Shallow soil samples collected in support of pre-construction site profiling activities at heavily industrialized site.

Four-part vertical composite samples collected from borings up to 8' bgs. Borings advanced using hand and powered augers. Existence of former railway bed necessitated use of jackhammer to penetrate the first two feet of material in most locations.

Additional services included pre-event site marking, One Call Center notification and subcontracting of private utility locate service to perform on-site geophysical survey on day of event.

“As always, the team was fantastic.

I’ve always felt that my projects were in good hands with any Blaine Tech person that I’ve had on site.

[Blaine Technicians] were friendly and conscientious, paid attention to the project details, and asked knowledgeable questions.

Thanks so much!”

DeWalt Electric Roto Hammer
AMS Flighted Augers



System O & M

SVE / GWE / Dual Phase Systems

Documented Inspections & Data Collection

System Performance Optimization

System Upgrades & Modifications

On-Call Maintenance & Repair

Remediation Support

Injection Support

Rebound Monitoring

System O & M

Weekly & Monthly Inspection

Former Dry Cleaners



Operations and Maintenance (O&M) is performed at this former drycleaner site to ensure that the system is running safely, effectively and within permit compliance limits.

Field services include:

- Documented inspections of knock-out vessels, blower and motor, heat exchanger, GAC vessels, flowmeters and piping, manifolds and valves
- Collecting readings from meters, totalizers and gauges
- Vapor sampling of extraction wells, soil vapor probes and system influent, intermediate and effluent streams
- Wastewater discharge sampling
- Oil changes and belt replacements

Remediation Support

Bioaugmentation Culture Injections NPL Superfund Site



YSI 600XL Multiparameter Meter (for pre-injection measurements)

“We would like to express our appreciation for your fine work and efforts and we look forward to working with all of you again.”

7-Week EVO Injection Monitoring Industrial Dry Cleaners



Grundfos Variable Speed 3" Submersible Pumps
Custom Manifolds

Remediation Support

Multi-Month Injection Project

Former Marine Fuel Terminal



Approximately 200,000 gallons of surfactant mixed water injected over a three-month period at this former marine bulk fuel facility.

Project required design and assembly of injection manifolds and onsite injection piping system.

Project also included daily observations and monitoring of a multi-source groundwater extraction system.



Pump & Aquifer Tests

Constant Rate Tests, Slug Tests, Step Tests

Multi-Day Durations / 24 Hour Staffing

Installation of Data Loggers & Transducers

Real Time Monitoring

Provided Equipment Includes:

Pumps

Instruments

Generators

Piping

Manifolds

Lighting

Pump & Aquifer Tests

180,000-Gallon, Multi-Week Pumping Test

Extraction & Agricultural Re-infiltration Test

Multiple pumping tests executed over a three week period at this highly sensitive litigation site.

Tests included:

- Step Test
- (2) 72-Hour Constant Rate Tests
- Weeklong Agricultural Leachate Rate Test

Around-the-clock support for each test — operating pumps and In-situ and Solinst Pressure Transducers and managing the transfer of water into 9 Frac tanks.

Additionally built the project-specific drip offload network and maintained the endangered species required perimeter fencing.



Pump & Aquifer Tests

90-Hour Pumping Test
Construction Dewatering Project



Grundfos 4" Submersible Pump, In-Situ miniTROLL Pressure Transducer, Trailer-Mounted Diesel Generator & Halogen Lighting

48-Hour Step / Constant Rate Test
Former Electronics Plant



Grundfos 4" Submersible Pump Flowmeters, Totalizers
Trailer Mounted Diesel Generator

**“I'd like to pass on a thank you to your crew. This site is unusual in its amount of regulations, rules and its increased sensitivity (not to mention the heat).
It's great to know that we have brought on the right company and you brought the right crew to support us in this important project.”**



Well Development

Hand Operated Surging Tools

High Speed Submersible Pumps

Specially Designed Pneumatic Pumps

Small Footprint vs. Drill Rig

Cost Effective



Wellhead Maintenance

Wellbox Removal & Replacement

Monument / Bollard Installation

Apron Replacement

Wellbox Re-Taps

Casing Extensions & Reductions

Well Cap, Lock Seal Replacement

Downhole Camera Video

Well Inspections

Search & Recovery

Debris Removal & Disposal

Wellhead Maintenance

Wellbox Removal & Replacement

Active Service Station



Wellhead maintenance services are designed to eliminate hazards and re-establish wellhead security and integrity.

Purpose-built maintenance vehicles are equipped with Integrated electric dump beds, generators, air compressors, and portable water tanks, concrete saws, and breaker hammers.

Technicians perform work “wet” with water spray systems in accordance with our Silica Dust Exposure Control Program.

“Their concrete finish work was the most professional I've seen by environmental subcontractors building a wellbox apron.”



Related Sampling Services

Surface Water & Stream Sampling

Seeps Sampling

Treatment System Sampling

Stormwater Sampling

Related Sampling Services

Rain Event Sampling of Ocean Mixing Zone

Air Force Base



Plastic Sampling Bucket

Industrial Water Channel Sampling

Former Scrap Metal Smelter, NPL Site



Telescopic Dipper, Disposable Cup

“I am continually impressed by the professionalism of the samplers.”

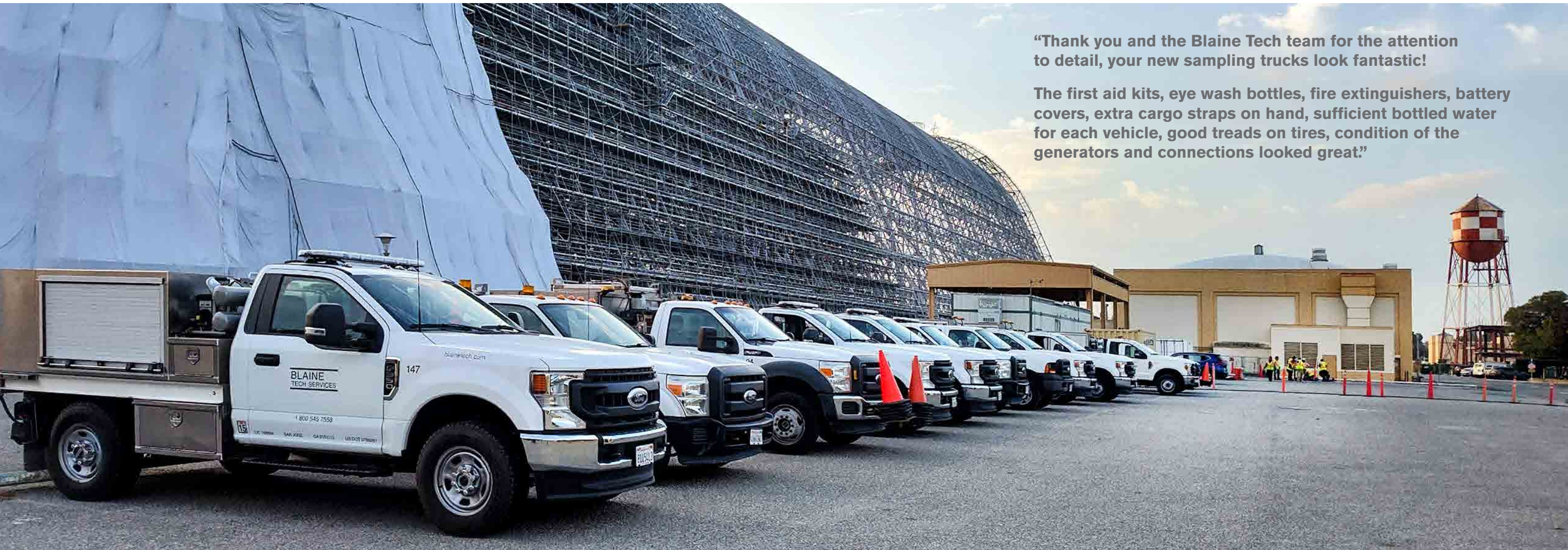
Equipment

Blaine Tech builds and maintains a fleet of specialized vehicles.

Sampling Vehicles are equipped with an electric generator, oilless air compressor, steam cleaner / pressure washer, integrated stainless steel decontamination sink, and onboard storage tanks for the temporary containment of Investigation Derived Waste (IDW).

We also own and operate hundreds of pieces of portable field equipment and instruments, including fixed and variable speed electric submersible pumps, pneumatic, peristaltic and mechanical pumps, and both single parameter and multiparameter meters.

All Field Vehicles are equipped with back-up cameras to improve safety during onsite maneuvering.



“Thank you and the Blaine Tech team for the attention to detail, your new sampling trucks look fantastic!”

The first aid kits, eye wash bottles, fire extinguishers, battery covers, extra cargo straps on hand, sufficient bottled water for each vehicle, good treads on tires, condition of the generators and connections looked great.”

Since 1985

Established in 1985, Blaine Tech Services is a licensed and fully-insured environmental field services contractor.

From early work in support of the first large-scale site investigations of the 1980s to the wide range of standardized environmental services provided today, Blaine Tech has remained focused on one goal – high quality / low cost field services.

This focus has enabled Blaine Tech to provide innovative and cost-effective field solutions to a broad base of engineers and environmental consultants on hundreds of uniquely challenging sites each year.



Leachate Well Sampling Circa 1990
Class 1 Hazardous Waste Landfill

Cost-Effective Specialization

Qualified Personnel

All field technicians are full-time employees who have completed in-house training and are skilled in the efficient use of our equipment. They can execute standardized as well as project specific protocols.

Properly Equipped

Based on project requirements and client communications, our personnel mobilize to the site with the apparatus necessary to complete the work safely, correctly and efficiently.

Purpose-Built Vehicles

Blaine Tech fleet vehicles are designed and outfitted to facilitate our work.

Responsive & Dependable

Our tracking systems and extensive support resources enable us to provide our clients with flexible scheduling and reliable service.



Discrete Sampling Below SPH / LNAPL Layer
Geotech Peristaltic Pump, YSI 550 DO Meter & Myron L Ultrameter II

Safety

Blaine Tech is committed to creating and maintaining safe work environments for all of our employees.

Field Qualified Personnel training includes full 40 Hour HAZWOPER certification, Respiratory Protection, Injury and Illness Prevention program (IIPP), HAZCOM, Fire Prevention, Heat Stress Prevention, First Aid/CPR, Back Safety, LOTO, PPE and Emergency Action Planning & Response.

Technicians receive Defensive Driver Training, Motor Vehicle Safety training, and conduct daily vehicle inspections, journey management planning and tailgate safety meetings.

Training is effective because Blaine Tech screens and selects personnel for aptitude, attitude, integrity and a willingness to fully execute approved procedures.

Blaine Tech personnel understand the value of safety observations, audits, and corrections. They expect to be audited by supervisors, clients and regulators.

Technicians are always willing to take direction, answer questions and explain the procedures they have been trained to perform. Technicians are skilled, confident, and productive.



Low Flow Sampling in DNAPL impacted well with Peristaltic Pump, Disposable Tubing
YSI Professional Plus Multiparameter Meter & Flow Cell, MiniRAE 3000 PID, Ventilation Fan

“I wanted to inform you that your field tech performed a superior job out at our site.

Without his hard work and knowledge of groundwater sampling conditions and standards we would have been on site for a longer duration.

He helped to bring our sampling event in under budget and we are very grateful.”

Contact Us

1 800 545 7558

Bart Gebbie

Vice President

310 885 4455 x 103

bgebbie@blainetech.com

Fran Thie

Vice President

408 573 0555 x 201

fthie@blainetech.com



BLAINE

TECH SERVICES

Corporate Headquarters
1680 Rogers Ave
San Jose, CA 95112

1 800 545 7558



blainetech.com



California Contractor 746684
Copyright © 2023 Blaine Tech Services, Inc.